



# Ettington Primary School

## Knowledge organiser

### Rocks

Year 3

#### Vocabulary

**Magma**- molten rock that remains underground.  
**Lava**- Molten rock that comes out of the ground is called lava.  
**Sediment**- Natural solid material that is broken down by processes of weathering, erosion and transported by the action of wind, water or ice or by the force of gravity acting on it.  
**Permeable**- Allows liquid to pass through.  
**Impermeable**- Does not allow liquids to pass through.  
**Durable**- withstand pressure, damage or hard wearing.  
**Acidity**- the level of acid in substances.  
**Igneous rock** - Rock that has been formed from magma or lava. Examples: obsidian, granite, basalt  
**Sedimentary rock** - Rock that has been formed by layers of sediment being pressed down hard and sticking together. You will see layers in the rock. Example: chalk, sandstone, limestone.  
**Human-made rock (anthropic rocks)** - Rocks made or modified by humans. The romans first invented concrete. Example: brick, concrete, coade stone.  
**Metamorphic rock** - Rock that started out as igneous or sedimentary but changed due to being exposed to extreme heat or pressure. Example: Marble, Quartzite, Slate.

An animal dies. Some parts of the body decay and, usually, only the skeleton is left.



The skeleton is covered with sand, earth, rock or seabed before the bones can disappear.



Over a very long time, the bones break down and leave a space in the earth, like an empty mould.



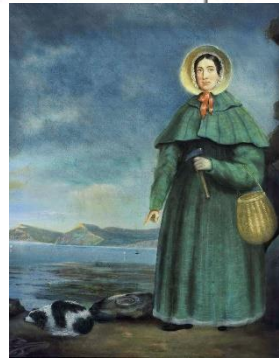
Minerals slowly fill the space in layers, in the exact shape of the bones.



Under lots of pressure, the new minerals harden into rock.



The earth is eroded away by the weather or the sea. The rock fossil is exposed and discovered.



#### Mary Anning (1799-1847)

English fossil collector who became known around the world for finds she made in Jurassic marine fossil beds located in Lyme Regis. She correctly identified the ichthyosaur when she was 12 years old. She was known as 'Mary Anning, The Fossil Finder'.



