

Ettington Church of England Primary School

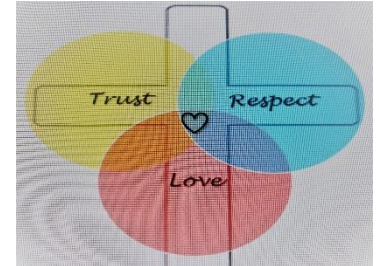
Newsletter 7 Spring Term 2025

14th March 2025

Learning for the Fullness of Life (John 10:10)

Our Christian Value for this half term is **RESPONSIBILITY** and **FRIENDSHIP**

'Encourage one another and build each other up'
Thessalonians 5.11



Dear parents, carers and the wider community,

Stars of the Week

Week ending 28.2.25	Week ending 7.3.25	Week ending 14.3.25
Rec: Daisy E Year 1: Poppy R Year 2: Finley D Year 3: Year 4: Beau L Year 5: Jake P Year 6: Charlie T Star Writer: Nelle G (Rec)	Rec: Arthur M Year 1: Eddie M Year 2: Finley D Year 3: Jess E Year 3: Jonah C Year 4: Freddie S Year 5: Heidi S Year 6: William B Star Writer: Jessica G (Y6)	Rec: Mila W Year 1: Izzie C Year 2: Beatrice H Year 3: Niamh F Year 4: Isla Mc G Year 5: Isla D Year 6: Eliza A Star Writer: Jude F (Y5)

A huge congratulations to all of our stars!

School news

On Thursday 6th, we enjoyed celebrating World Book Day. There were some fantastic costumes worn throughout the school by the children and the staff. The children have looked at lots of different books and talked about where is their favourite place to read. We also practised recommending books to each other, enjoyed listening to staff read some of their favourite children's books and shared our favourite books with our buddies across the school. Always a huge success, we love any chance to dress up and read a book!



Ettington Church of England Primary School
Churchill Close, Ettington. CV37 7SP.
Tel: 01789 740236 Email: admin3024@welearn365.com
Headteacher Mrs Michelle Crowe



Reading is the foundation of all learning and it was fantastic to see how many of the children in our school love reading so much. A huge thank you to all of the parents who helped create some wonderful costumes.

Stratford Literary Festival



If World Book Day has (as we all hope) encouraged everyone to read more and enjoy books and writing further, the Stratford Literary Festival is running in May, with a range of guest speakers including a great children's favourite: Jacqueline Wilson.

Sessions must be booked in advance.

[STRATFORD LITERACY FESTIVAL EVENTS FOR CHILDREN](#)

FoES

Calling all gardeners! If there are any contacts or volunteers who can help in the final phase of our well-being garden / picnic area, please contact the FoES either Steph, Harriet or Leanne on the FoES Team or via the school office. Thank you!

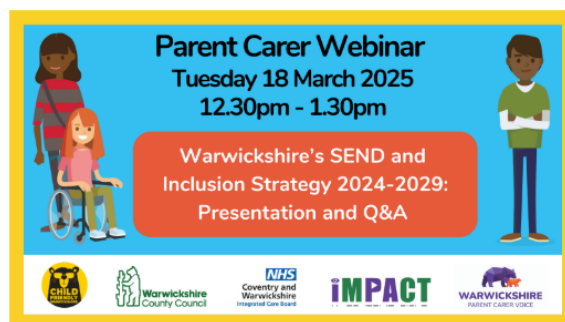
Please don't forget that FoES are now registered with easyfundraising, which means you can raise FREE donations for us every time you shop online. Over 8,000 retailers will donate to us when you use easyfundraising to shop with them – at no extra cost to yourself! These donations mount up and make a BIG difference to us, so we'd really appreciate it if you could please take a moment to sign up and support us. It's completely FREE and is quick and easy to do. You can find our easyfundraising page by clicking below. Thank you so much!



[EASY FUNDRAISING ETTINGTON](#)

Ettington Church of England Primary School
Churchill Close, Ettington. CV37 7SP.
Tel: 01789 740236 Email: admin3024@welearn365.com
Headteacher Mrs Michelle Crowe

SEND



Special webinar to launch the Warwickshire SEND and Inclusion Strategy 2024-2029

The new [Warwickshire Special Educational Needs and Disabilities \(SEND\) and Inclusion Strategy 2024-2029](#) has been published and is now live on the County Council website.

This comprehensive five-year plan aims to address the key challenges in services for children and young people with SEND.

The strategy has been shaped through the collaborative efforts of the Warwickshire SEND and Inclusion Partnership Board, drawing on a wide range of expertise and experiences. Significant engagement with key stakeholders has ensured that the voices of those who use and deliver SEND services have been central to its creation.

Parents, carers, and others with an interest in SEND, are invited to sign up to a special webinar on **Tuesday 18 March, from 12.30pm to 1.30pm**, to learn more. The first part of the webinar will consist of a presentation outlining the main aims and six priorities included within the strategy and the actions identified to deliver these over the next five years. This will be followed by a live Q&A, providing an opportunity for attendees to ask questions about the strategy.

To sign up to the webinar please [complete this short form](#).

For those unable to attend on the day, the presentation element of the session will be recorded and made available after the event on [Warwickshire's Local Offer pages](#).



Ettington Church of England Primary School
Churchill Close, Ettington. CV37 7SP.
Tel: 01789 740236 Email: admin3024@welearn365.com
Headteacher Mrs Michelle Crowe



Bookings now open for the Easter Holiday Activities and Food (HAF) Programme

Eligible families across Warwickshire can now book Easter holiday activities offered through the HAF Programme.

Please contact the HAF providers directly to book a place.

Visit the [HAF Spring Activities webpage](#) to view frequently asked questions including HAF codes, activity listings and booking queries.

Free SEND consultations available for parents and carers



Do you need to speak to a SEND advisor?

Warwickshire SEND Information, Advice and Support Service (SENDIAS) offers free impartial and confidential advice to young people aged 16-25 and parents/carers of children living with SEND across the county.

If you are looking for advice, you can now book an appointment to meet with a SEND advisor for a free 45-minute consultation. Appointment dates and times will be released at the start of each month.

You can choose your preferred way to book. Either visit the [SENDIAS Eventbrite page](#) or complete a [Consultation Request Form](#). Alternatively, you can get in touch with SENDIAS to request a call back by phoning **01788 593159** or emailing warwickshiresendias@barnardos.org.uk

You can also [follow Warwickshire SENDIAS on Facebook](#) for regular updates and events



Ettington Church of England Primary School
Churchill Close, Ettington. CV37 7SP.
Tel: 01789 740236 Email: admin3024@welearn365.com
Headteacher Mrs Michelle Crowe

Norovirus Advice

STOP NOROVIRUS SPREADING POSTER



UK Health
Security
Agency

Stop norovirus spreading

Norovirus, also known as the 'winter vomiting bug', is the most common stomach bug in the UK. It can spread easily through close contact, or by contaminated surfaces, food or water.

The main symptoms of norovirus include a sudden onset of nausea, followed by projectile vomiting and diarrhoea, usually 1 to 2 days after becoming infected. Other common symptoms include a high fever, a headache and aching arms and legs.

Good hand hygiene is important to stop norovirus spreading.

To stop norovirus spreading, you should:

- wash your hands thoroughly using soap and warm water after using the toilet or contact with a sick individual and before preparing and eating food.
- stay off school or work until you have not been sick or had diarrhoea for at least two days
- not rely on alcohol gels instead of washing your hands, as these do not kill the virus
- wash any contaminated clothing or bedding using detergent at 60°C using disposable gloves to handle any items
- use bleach-based cleaners to disinfect surfaces

If you catch it, stay home for 48 hours after your symptoms clear

DO ✓

Wash clothes
and bedding
at 60°C



Wash hands with
soap, clean surfaces
with bleach-based
disinfectants



DON'T ✗

Go to work or
school, visit care
homes or hospitals



Prepare food
for others



Most people will make a full recovery in 2-3 days without needing any medicine. It is important to keep hydrated – especially children and the elderly.

Try not to visit A&E or GP surgeries if you have symptoms of norovirus unless advised to do so by a healthcare professional, as this may spread the bug to others. Call ahead to a GP or ring NHS 111 if you are worried about your symptoms.

Further information is available at NHS 111 or NHS.uk (<https://www.nhs.uk/conditions/norovirus/>)

© Crown copyright



Ettington Church of England Primary School
Churchill Close, Ettington. CV37 7SP.

Tel: 01789 740236 Email: admin3024@welearn365.com

Headteacher Mrs Michelle Crowe

Courageous Advocacy

Inspired by their latest text *The Suffragettes – The Battle for Equality* and World Recycling Day on Tuesday 18th March, Year 6 have been inspired to hold a 'New 2 You' clothes sale. Planned and organised in it's entirety by the children, your support would be greatly appreciated.

Recycle – reuse – rethink
your wardrobe!

On Friday the 21st of March, some of the year sixes are holding a clothes sale, where you get the opportunity to bring in and buy second – hand clothes in great condition.

All of the money raised will go towards buying the school more clothes such as reception dressing up box supplies, Nativity costumes and more football kits.

We would greatly appreciate it if you could help support this sale and bring in some unwanted clothes that are still in good condition and are clean before the 21st of march. We will be holding this sale at 3:10. Thank you.



Ettington Church of England Primary School
Churchill Close, Ettington. CV37 7SP.
Tel: 01789 740236 Email: admin3024@welearn365.com
Headteacher Mrs Michelle Crowe

Eco Council

Children will be leading worship looking at the effects of plastic waste and running a KS2 classroom-based competition to reduce waste in lunchboxes. Where possible, please bear in mind, when packing your child's lunchbox, the amount of plastic waste. When weighed last month, the packaging wastage from lunchboxes exceeded 7kg for the week.

What to include in a 'Waste Free' lunch?

- Pack sandwiches in a reusable container or kitchen roll/ greaseproof paper that can be composted
- Buy large packets of biscuits, crisps, raisins and put a few in a reusable container
- Eat fruit snacks as leftovers can be composted
- Take drinks in a drinks bottle that can be used again
- Use cutlery that can be washed and used again



What to avoid in a 'Waste Free' lunch?

- Foil or Clingfilm
- Individually packed items i.e. biscuits, fruit, cheese, chocolate
- Drinks in cartons or foil pouches

Sport

Recently, on the sporting front, Ettington has taken part in a Year 5 Netball tournament at Kings High School, in which they won one match, drew two matches and lost two matches narrowly. All children who participated were fantastic and thoroughly enjoyed the experience. Well done to everyone for your super team work and engagement. In school, all children have taken part in the recent Fit 4 School assessments with great success and continue to wow everyone with their sporting excellence.

With the lighter nights coming there are several more sporting events on the horizon. Year 6 children are taking part in a Boccia tournament next Wednesday and the following Thursday there is a Year 5/6 football match at home with a planned returned away fixture also in the pipeline. All supporters welcome!

Year 1 are due to participate in a Mini Tennis Stars- Tennis Roadshow. Ryan, the lead coach, is also the head coach at Stratford-upon-Avon Tennis Club and works for the Warwickshire LTA, is booked to work with the children on Monday March 31st and a whole school Golf Day is planned for May.

Keep being active and keep being healthy and fit. Mr Higgitt.



Ettington Church of England Primary School
Churchill Close, Ettington. CV37 7SP.
Tel: 01789 740236 Email: admin3024@welearn365.com
Headteacher Mrs Michelle Crowe

Curriculum Information

The Year 1 Phonics Screening Check takes place during the week Monday 9th – Friday 13th June. The Phonics Screening Check contains 40 words, divided into two sections of 20 words. Both sections contain a mixture of read words and pseudo-words (words that are phonically decodable but are not actual words with an associated meaning). The pass rate for all previous checks has been 32/40. Parents and carers can practise the Phonics Screening Check at home with practice papers available on Year 1 Google Classroom. Parent information will also be available on Google Classroom. Please feel free to speak to the staff if you have a specific question.

The Year 4 Multiplication Tables Check (starting in the week beginning 2nd June up to Friday 13th June) is an on-screen check consisting of 25 times table questions. Children will have the opportunity to answer 3 practise questions before taking the actual check. They will then have 6 seconds to answer each question. You can practise with your child at home using the Mathsframe website, which exactly mirrors the official check -

<https://mathsframe.co.uk/en/resources/resource/477/Multiplication-Tables-Check>.

There is no pass mark for the test and individual results will be shared with parents in our end of year reports. The national average score last year was 20.6 and 34% of children nationally achieved full marks.

Engaging in [TT ROCKSTARS](#) each week is an important part of helping our children to develop these key pieces of knowledge. The National Curriculum expectation is that all children know all times tables up to 12x12 by the end of Year 4.



Year 6 children will take their **SATS** during the week beginning 12th May.

- Monday 12th - English Grammar, Punctuation and Spelling paper 1 and paper 2.
- Tuesday 13th - English Reading.
- Wednesday 14th - Mathematics paper 1 and paper 2.
- Thursday 15th - Mathematics paper 3.



Ettington Church of England Primary School
Churchill Close, Ettington. CV37 7SP.
Tel: 01789 740236 Email: admin3024@welearn365.com
Headteacher Mrs Michelle Crowe



[STA Phonics Screening Information for Parents](#)

[STA Multiplication Information for Parents](#)

[STA KS2 SATs Information](#)

Free School Meals

Just a reminder that all pupils from Reception to Year 2 are entitled to Universal Free Meals. Year 3-6 may be entitled to a free school lunch – you can check on Warwickshire County Council's website.

Meals are booked through ParentPay, but if you require any assistance or would like to discuss your child's dietary needs further, please contact the school office.

[FREE SCHOOL MEALS WARWICKSHIRE](#)



Ettington Church of England Primary School
 Churchill Close, Ettington. CV37 7SP.
 Tel: 01789 740236 Email: admin3024@welearn365.com
 Headteacher Mrs Michelle Crowe

Master Builders at Work

"The school's first Lego club, LEGO MASTERS, has been a great success!

This term children have been: exploring building facial expressions; learning how to be resourceful; experimenting with pixel / mosaic art; planning big collaborative builds and working together; being engineers; and much more! Pictured are the bookmarks we made for World Book Day.



They have been taking ownership over their club too – designing the posters, naming the club and discussing its rules.

Well done Lego Masters, you have impressed us with your imaginations, focus, respect of others and ability to take on even the most difficult challenges.

Happy building!"

Visit our

LEGO RAFFLE

After school on **Thursday 10th April**

GUESS how many bricks in the giant jar and **WIN IT** + loads of Lego prizes.

Fun **CAKE** sale.

Buy **LEGO CHALLENGE** build bags. (+ **FREE** Challenge Ideas Sheets)

Build & take home a **MINIFIGURE**.

! Cash only. Bring your **50ps** and **£1s**.

Organised by EPS Lego Club.
All profits go to F&ES.



Ettington Church of England Primary School
Churchill Close, Ettington. CV37 7SP.
Tel: 01789 740236 Email: admin3024@welearn365.com
Headteacher Mrs Michelle Crowe

Internet Safety



FREE ONLINE SAFETY WORKSHOP

FOR PARENTS OF SCHOOL AGED CHILDREN

Get practical hints and tips to support your children and keep them safe online, and learn how to keep up to date in the ever changing online world.



Wed 19th
MARCH 7pm-8pm



Speaker
KAT HOWARD

Head of Education & Wellbeing (UK)
Smoothwall



Register for the Zoom link and parent flyer here:

<https://forms.office.com/e/x2JJKwLx8y>

Kat has been working in and with schools for over 20 years to develop their understanding of online safety. She is passionate about the importance of online safety in schools and the wider community.

For more information on online safety, visit <https://warwickshire.onlinesafetyhub.uk/>



Ettington Church of England Primary School
Churchill Close, Ettington. CV37 7SP.

Tel: 01789 740236 Email: admin3024@welearn365.com

Headteacher Mrs Michelle Crowe

How can we help?

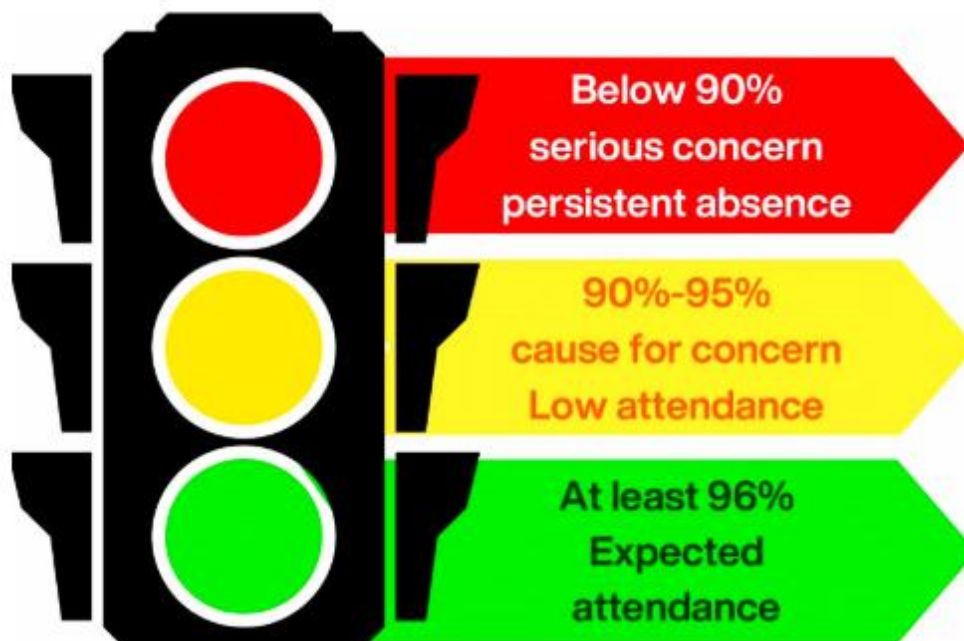
The Family Information Service (FIS) supports families across Warwickshire with information and signposting. You can get in touch with the team by emailing fis@warwickshire.gov.uk, calling [0800 408 1558](tel:08004081558) or finding support at www.warwickshire.gov.uk/childrenandfamilies. If you would like to know more about FIS and where to find information and support on the FIS and SEND Local Offer webpages, book a place on an [online FIS discovery session](#).



You can read the latest newsletter and book onto free courses here:

<https://mailchi.mp/warwickshire/family-information-service-newsletter-8828285?e=71573c36f0>

Working Together to Improve School Attendance



Ettington Church of England Primary School
Churchill Close, Ettington. CV37 7SP.
Tel: 01789 740236 Email: admin3024@welearn365.com
Headteacher Mrs Michelle Crowe



Should I keep my child off school?



Yes

Until...

Chickenpox	at least 5 days from the onset of the rash and until all blisters have crusted over
Diarrhoea and Vomiting	48 hours after their last episode
Cold and Flu-like illness (including COVID-19)	they no longer have a high temperature and feel well enough to attend. Follow the national guidance if they've tested positive for COVID-19.
Impetigo	their sores have crusted and healed, or 48 hours after they started antibiotics
Measles	4 days after the rash first appeared
Mumps	5 days after the swelling started
Scabies	they've had their first treatment
Scarlet Fever	24 hours after they started taking antibiotics
Whooping Cough	48 hours after they started taking antibiotics

No

but make sure you let their school or nursery know about...

Hand, foot and mouth	Glandular fever
Head lice	Tonsillitis
Threadworms	Slapped cheek



SCAN ME

Advice and guidance

To find out more, search for health protection in schools or scan the QR code or visit <https://qrc0.de/minfec>.

© Crown Copyright 2021. Published under licence from the Crown. All rights reserved. 20211101



Ettington Church of England Primary School
Churchill Close, Ettington. CV37 7SP.
Tel: 01789 740236 Email: admin3024@welearn365.com
Headteacher Mrs Michelle Crowe

Finally...

As you may know, Miss Gold has made the decision to leave Ettington at Easter, following an opportunity that has arisen at her children's school.

Miss Gold has been a teacher at Ettington for the last 11 years and is, without question, a hugely valuable and loved member of the school team, having taught many of your children over the years. However, we are delighted to announce that we have appointed Miss Heather Sewell to step into Miss Gold's shoes from Monday 28th April to work alongside Mrs Hudspith in Reception. I am sure that you will join me in wishing Miss Gold every joy and success for the future and also welcome Miss Sewell to the Ettington Team.

Very best wishes,

Mrs Michelle Crowe

Head Teacher

Useful contacts



Connect4Health

A yellow banner with rounded corners containing contact information for Connect4Health. On the left is a logo with a smiley face and 'C4H' in a pink speech bubble. The text on the right provides contact details for text chat, parent line, phone, and email.

Text ChatHealth (11-19 years): 07507 331 525
Text ParentLine: 07520 619 376
Call us: 03300 245 204
Email us: connectforhealth@compass-uk.org

[Connect4Health Monthly Newsletter](#)

The logo for Child Friendly Warwickshire, featuring a stylized bear head in a yellow circle with the text 'CHILD FRIENDLY WARWICKSHIRE' below it.

Child Friendly Warwickshire

The Family Information Service (FIS) supports families across Warwickshire with information and signposting. You can get in touch with the team by

emailing fis@warwickshire.gov.uk, calling 0800 408 1558 or finding support at [Warwickshire Family Information Support](#)



Ettington Church of England Primary School
Churchill Close, Ettington. CV37 7SP.
Tel: 01789 740236 Email: admin3024@welearn365.com
Headteacher Mrs Michelle Crowe

If you would like to know more about FIS and where to find information and support on the FIS and SEND Local Offer webpages, book a place on an [online FIS discovery session](#).

Safeguarding

Please remember...



Warwickshire
Safeguarding

CHILD ABUSE HAPPENS IN WARWICKSHIRE



NOTICE THINGS!

Safeguarding is everyone's responsibility

If you have concerns that a child is suffering any form of abuse, neglect or cruelty contact the Warwickshire Children and Families Front Door immediately by calling
01926 414144

**Lines are open Monday to Thursday 8.30am - 5.30pm,
Friday 8.30am - 5.00pm**

If you need to get in touch out of usual office hours, please contact the Emergency Duty Team immediately by calling
01926 886922

If you think that a child is at immediate risk, contact the Police immediately by calling 999



Ettington Church of England Primary School
Churchill Close, Ettington. CV37 7SP.
Tel: 01789 740236 Email: admin3024@welearn365.com
Headteacher Mrs Michelle Crowe

Dates for your calendar and diary

Spring Term 2 2025	Summer Term 1 2025
Monday 24 February (School reopens to pupils)	Monday 28 April (School reopens to pupils)
Thursday 6 March World Book Day	Thursday 1 May Whole School Golf Day
Monday 10 March CO2 workshops (Year 2 and Year 5)	Friday 2 May School Photos
Saturday 15 March FoES DIY morning!	w.c. Monday 12 May Year 6 SATs Testing
Tuesday 18 March World Recycling Day	Tuesday 13 May Year 2 Trip to Ryton Pools
Friday 21 March 1.30pm-3.00pm Years 1 and 2 Maths Workshop	Friday 23 May Break the Rules Day!
Monday 24 March Shakespeare Week	Last day of term: Friday 23 May Half Term
Tuesday 25 March Rec / Year 6 Connect 4 Health needs assessments	
Friday 28 March Year 4 Trip to Stratford as part of Shakespeare Week	
Monday 31 March Autism Awareness Week	
Monday 31 March iSing POP whole school musical workshops and assembly	
Monday 31 March Year 1 Mini Tennis Stars- Tennis Roadshow	



Ettington Church of England Primary School
Churchill Close, Ettington. CV37 7SP.
Tel: 01789 740236 Email: admin3024@welearn365.com
Headteacher Mrs Michelle Crowe

Thursday 3 April 9.30am-10.30am

Easter Service at Church

ALL WELCOME TO JOIN US

Please let your child's class teacher know if
you can help us walk to and from Church

Last day of term: Friday 11 April
Easter Holidays



Ettington Church of England Primary School
Churchill Close, Ettington. CV37 7SP.

Tel: 01789 740236 Email: admin3024@welearn365.com

Headteacher Mrs Michelle Crowe