

Ettington Church of England Primary School

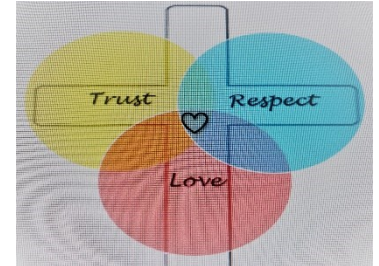
Newsletter 3 Autumn Term 2024

22<sup>nd</sup> November 2024

*Learning for the Fullness of Life (John 10:10)*

Our Christian Value for this half term is **GENEROSITY**.

**A community flourishes when people plant trees under which they will never sit.**



Dear parents, carers and the wider community,

Please find information on what's been going on in school so far this half term and important information for the run up to Christmas – undoubtedly an incredibly busy time of year for us all!

**Stars of the Week**

<b>Week ending 8.11.24</b>	<b>Week ending 15.11.2024</b>	<b>Week ending 22.11.2024</b>
Rec: Martha L Year 1: Olivia E Year 2: William M Year 3: Ernie M Year 4: Charlotte A Year 5: Year 6: Tabitha A Star Writer: Ottilie SR	Rec: Gigi D Year 1: Louie T Year 2: Aurelia W Year 3: Trixie W Year 4: James D Year 5: Beau A Eva H Year 6: Lottie H Star Writer: Edward H	Rec: Elouise N Year 1: Pola Year 2: Patience R Year 3: Alfie R Year 4: Lola H Year 5: Year 6: Jess G Star Writer: Hattie O

**School news**

Congratulations to Ivor, Jasper, Elodie-Rose, Beatie, Jules, Evie, Beau, Zaria, Elina, Florence, Hannah and Isla in Year 4 who have all been selected to have their written work published as part of the Young Writers Poetry Competition. We are all incredibly proud of you and are looking forward to sharing your work once it has been published.

Thank you to the parents in Reception who took part in the Reception Inspire Workshop for Reading. The perfect opportunity to come and Learn with Us! We look forward to welcoming you to the Reception Inspire Workshop for Maths on Friday 13<sup>th</sup> December at 1.30pm. A unique opportunity to set foot in your child's classroom and see learning in action.



Ettington Church of England Primary School  
Churchill Close, Ettington. CV37 7SP.  
Tel: 01789 740236 Email: [admin3024@welearn365.com](mailto:admin3024@welearn365.com)  
Headteacher Mrs Michelle Crowe

Well done Jaxon in Year 1, who featured on @WarksLibraries, for building & organising his own mini library at home!

We love to hear inspired stories linked to learning at home!



Thank you to all who supported this year's Remembrance Day. We have yet to find out how much money was raised from the poppy appeal, but the money tin could hardly be lifted when it was collected.



### **Anti-Bullying Week**

At Ettington, we consider that bullying of any kind is unacceptable. We want to uphold our Christian ethos within the school environment where everyone can work, play and express themselves, free from the fear of being bullied. There is a shared understanding of what constitutes bullying, how we prevent bullying and how we respond to reports of bullying. Our children know how to report actual and perceived bullying incidents and are supported in having the confidence to do so.

We follow the Anti-Bullying Alliance definition of bullying:

*"The **repetitive, intentional hurting** of one person or group by another person or group, where the relationship involves an **imbalance of power**. Bullying can be physical, verbal or psychological. It can happen face to face (in and out of school) or online."*

We use the acronym **STOP** and teach this to our children.

**S**everal Times **O**n Purpose

**S**tart Telling **O**ther People



Ettington Church of England Primary School  
Churchill Close, Ettington. CV37 7SP.  
Tel: 01789 740236 Email: [admin3024@welearn365.com](mailto:admin3024@welearn365.com)  
Headteacher Mrs Michelle Crowe

Several  
Times  
On  
Purpose



Start  
Telling  
Other  
People

Our curriculum equips our children with strategies to be able to talk about anything that worries them in any area of their lives. This Anti-Bullying Week, the theme was 'Choose Respect', something we endeavour to live out daily through our core Christian Values. We have come together to have lessons about what bullying means to us, how banter can turn into something more hurtful, and what we can do to stop bullying, ensuring RESPECT for all. Pupils and staff wore odd socks to help celebrate what makes us all unique and to raise money for Children in Need! I am thrilled that the children have raised £91.65.

#### **Diwali Dance Workshop**

Last week, children across the school celebrated Diwali – The Hindu Festival of Light by participating in an inspiring dance workshop. Led by professional dancers, each class were given the opportunity to deepen their knowledge of the famous story of Diwali through the medium of dance. Great fun was had by all!



Ettington Church of England Primary School  
Churchill Close, Ettington. CV37 7SP.  
Tel: 01789 740236 Email: [admin3024@welearn365.com](mailto:admin3024@welearn365.com)  
Headteacher Mrs Michelle Crowe



## **FoES Christmas**

### **Smiggle Advent Calendar**

Smiggle Advent Calendar tickets will be on sale at 3.15pm every day from Monday 25th November (cash only) with the winner being announced in Collective Worship on Friday 29th November.

### **FoES AGM - All very welcome!**

Tuesday 26th November  
7.30pm at The Chequers

### **FoES Christmas Raffle**

One book of tickets has been sent home with every child. Please return stubs and cash to the school office by Thursday 12th December. Please let FoES know if you'd like extra books of tickets.

### ***FoES Christmas Fayre***

***Friday 6th December***

***3.15 - 5.15pm at the Community Centre***

***Volunteers to help out are still required. Please speak to a member of FoES if you can help.***

On Friday 6<sup>th</sup> December, FoES are inviting the children to come into school wearing a Christmas jumper or festive top in exchange for some chocolate (or sweets) for the ever-popular chocolate tombola which will be at the Christmas Fayre later that day!

**The Christmas jumper is instead of a school jumper/cardigan, the rest of school uniform is still compulsory.**

Please do come along to the Christmas Fayre at the Community Centre to support one of the biggest school fundraisers of the year. FoES really rely on our school family and wider community to support these events. There'll be a dedicated shopping hall, lots of games, Santa's grotto, as well as plenty of festive refreshments!

### **Reverse Advent Calendar**

On Monday 2<sup>nd</sup> December, we will also begin our Reverse Advent Calendar. Teachers will publish lists and advise which day through December your child will be asked to bring a non-perishable food item into school. Working in conjunction with the Church, our aim is to provide food hampers for our local food bank.



Ettington Church of England Primary School  
Churchill Close, Ettington. CV37 7SP.  
Tel: 01789 740236 Email: [admin3024@welearn365.com](mailto:admin3024@welearn365.com)  
Headteacher Mrs Michelle Crowe

## School Christmas Dinner Menu

This year's school Christmas dinner is on Wednesday 18<sup>th</sup> December. If your child would like a Christmas dinner, please can you ensure that you book through ParentPay. The menu is attached towards the bottom of the newsletter.

May I also thank Warwickshire Christmas Tree Farm for their 50% discount on our School Christmas Tree. This will be up in school from Monday 2<sup>nd</sup> December!

## School Library

Please don't forget that Ms McNair and our Year 6 Librarians are opening the school library to all each Friday after school. Please stop by and borrow a book or 2. Did you know ...

# Read One Book A Day To a Child

*Your Child Will Enjoy:*

*by Age 1.....365 Books*

*by Age 2.....730 Books*

*by Age 3.....1095 Books*

*by Age 4.....1460 Books*

## **In Reality:**

*Dear Zoo- 301 times, The Very Hungry Caterpillar- 431  
times and Everyone Poops- 728 TIMES!*

## Sports

Last week, over 25 children from Key Stage 2 took part in a cross-country event at Shipston Sports Club, with some great results. The race was a mile long run against children from a range of different schools with points awarded for the highest placed boy and girl in each year group. Sadly, we did not have girls from year 5 to take part so we could not score any points for this category, however we did manage to finish 3<sup>rd</sup> overall with a brilliant 1<sup>st</sup> place finish from Ethan in Year 6, a fantastic 2<sup>nd</sup> place for Austin in Year 5 along with some other excellent performances from all of our children. But more importantly, well done for all who finished the run. It is always good to remember; 'Any runner, jogger or walker is always going faster than the one that is on the sofa.' In school, lunch time football club is proving a great success, along with after school multi-skills and football. Incredibly, all children across all year groups achieved fantastic results in the recent Fit 4 Schools assessments based on different fitness drills and skills.



Ettington Church of England Primary School  
Churchill Close, Ettington. CV37 7SP.  
Tel: 01789 740236 Email: [admin3024@welearn365.com](mailto:admin3024@welearn365.com)  
Headteacher Mrs Michelle Crowe

## Winter Weather Procedures

With the cold weather upon us, I thought it would be useful to remind parents and carers of the emergency procedures should a school closure be enforced due to snow, flooding or bad weather.

For occasions such as the ones above, I will be in regular (early morning) consultation with both our Chair of Governors, Mr. Harper (Caretaker) and the Consortia Heads across our locality. We will endeavour to decide as early as possible, but this cannot always be guaranteed. School closure will be communicated in several ways: -

- School Text 2 Parents message - it is parents' responsibility to make sure the school office always has the most up-to-date contact details, including at least two emergency contacts.
- Radio - BBC Radio Coventry and Warwickshire.
- Warwickshire County Council Schools Closure site on the internet

If a decision is made to close our school prematurely during the day, our Text 2 Parents system will be used. Children will NOT be allowed to be collected by a different adult to their parents unless parents have contacted the school to confirm this, OR they are listed as an emergency contact.

If school remains open but the playgrounds are icy and deemed slippy, we will inform you as early as possible via Text 2 parents. It is normally the rear of the school that is most affected by ice and when these slippy conditions occur we lock the rear of the school and advise that children should enter school through the front of the main building.

The decision to close is not one taken lightly, but we must consider the safety of pupils, parents and the staff, many of whom do not live locally. Thank you, in anticipation for your patience, co-operation and understanding!

## SEND News

We are always working hard to develop our skills and knowledge around all areas of Special Educational Needs and Disabilities, to enable us to offer our children the best support that we can with the resources and funding available.

I would like to bring this conference to your attention. It is free to any parents or carers who may wish to further their own knowledge about autism. Please note that places are limited:

Together With Autism Conference - Leamington Spa (9.45am - 4pm): On Saturday 7th December there is a free conference organised by 'Act for Autism' where expert speakers and people with ASD will share experiences and advice on how to support and understand ASD. There are a range of workshops also available on the day. To find out more and to book a free ticket follow this link:



Ettington Church of England Primary School  
Churchill Close, Ettington. CV37 7SP.  
Tel: 01789 740236 Email: [admin3024@welearn365.com](mailto:admin3024@welearn365.com)  
Headteacher Mrs Michelle Crowe

<https://www.eventbrite.co.uk/e/leamington-spa-in-person-together-with-autism-conference-tickets-1072618955169?aff=oddtcreator>



### Attendance

School starts promptly at 8.45am. School gates will be opened at 8.40am. If a child arrives at school after the school gates are closed at 8.45am without prior arrangements having been agreed, they will be deemed late. Registers close at 9.15am and arrival at school after this time, without prior approval or extenuating circumstances, will be recorded as an unauthorised absence.

Attendance below 96% requires improvement and below 90% is defined by the Department for Education as 'persistent absenteeism', which could lead to intervention from the Warwickshire Attendance Service. Good attendance is vital for the academic, social and emotional success of pupils.

In the first half term (Autumn 1) 3½ days off school from September until October half term holiday will make your child's attendance under 90%. This is particularly tricky when balancing good attendance with good health – children with sickness and/or diarrhoea need to be off school for 48 hours from the last episode.

7 days off school from September until the Christmas holiday will make your child's attendance under 90%.

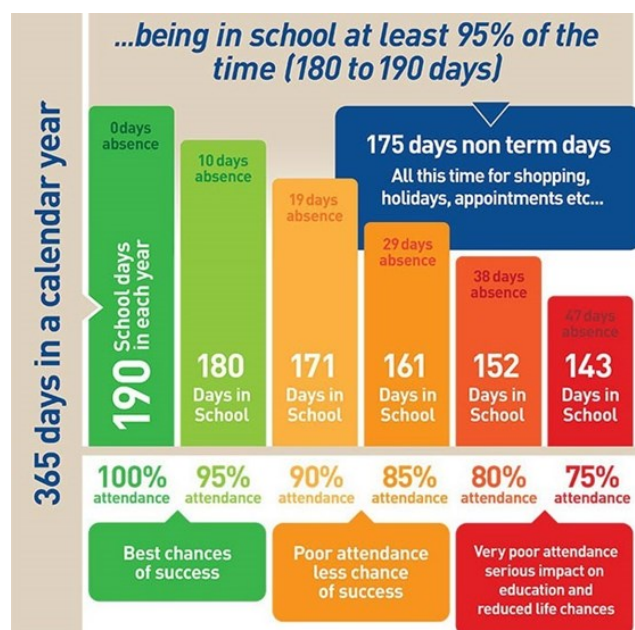


Thank you for your continued support in ensuring your children attend school whenever possible.

Ettington Church of England Primary School  
Churchill Close, Ettington. CV37 7SP.

Tel: 01789 740236 Email: [admin3024@welearn365.com](mailto:admin3024@welearn365.com)

Headteacher Mrs Michelle Crowe



## 1 Every Day Counts

Learning is a progressive activity. Each lesson and each day builds on another. If your child is absent for lessons that include demonstrations, discussions, experiments and other participation activities as part of the daily learning activities, they are missing essential learning that cannot be made up.

## 2 Benefits of Good Attendance

- Pupils with good attendance generally achieve higher grades.
- Pupils with good attendance generally enjoy school more.
- Having a good education will help to give your child the best possible start in life.
- Good school attendance helps to develop other responsible patterns of behaviour.

## 3 Risks of Poor Attendance

- Pupils are likely to miss learning activities that their classmates have taken part in, which could mean they fall behind.
- They miss out on social interaction with friends/classmates - this can have a negative effect on their wellbeing and self-esteem.
- Low attendance is associated with anti-social behaviour and poor learning behaviours.

## 4 Term Time Holidays

It is not a parental right to take their children on holiday during term time. Holidays in term time will not be authorised, unless there are exceptional circumstances and you have completed a leave of absence request form in advance. If you choose to take your child out of school for an unauthorised holiday you could receive a penalty notice of £80 per parent per child.

## 5 The Law and You

The Law states (Education Act 1996, Section 7) that all children of compulsory school age must receive an appropriate full-time education. As a parent / carer, you are legally responsible for making sure your child receives an effective education. Failure to ensure your child attends school regularly could lead to intervention: fixed penalty notices, prosecution, an Education Supervision Order.

## 6 Can I get Support?

Absolutely! We appreciate the unavoidable events that affect our pupils and their families. We believe that the most effective way to ensure your child remains on track is to work together to maximise support in their/your time of need. Our caring and dedicated staff are committed to making sure your child is happy and getting the best out of their time in school. Talk to us.



## **Connect 4 Health - Health & Wellbeing Newsletter**

Read your latest health and wellbeing newsletter, delivered to you from Connect for Health, your School Nursing Service.

This issue features information about anaphylaxis awareness, national hygiene week, ADHD awareness and dyslexia information.

As we move into the colder months, there is also a focus on germ prevention and promoting hand washing, particularly for our younger children.

[Connect 4 Health parent newsletter](#)



### **Reception, Junior and Secondary 2025**

Just a reminder that the deadline for parents and carers to submit their application for a Reception place in September next year is 15<sup>th</sup> January 2025. This comes around very quickly after the Christmas break!

The online application link is: <https://www.warwickshire.gov.uk/primaryplace>

### **Household Support**

On 4th September 2024, the Chancellor announced that the Household Support Fund would be extended for a further six months from 1st October 2024 to 31st March 2025. The objective of the Department for Work and Pensions' Household Support Fund grant is to provide crisis support to vulnerable households in most need with the cost of essentials, in particular food, energy, and water bills.

Warwickshire County Council continues to be responsible for the administration of this grant for the county and is using a proportion of the funding to proactively support those families who are eligible for benefits-related free school meals with a cost-



Ettington Church of England Primary School  
Churchill Close, Ettington. CV37 7SP.  
Tel: 01789 740236 Email: [admin3024@welearn365.com](mailto:admin3024@welearn365.com)  
Headteacher Mrs Michelle Crowe

of-living payment. This does not apply to children on the universal free school meal offer.

Eligible families in Warwickshire will be sent an automatic cost of living payment in the form of Huggg supermarket vouchers by 27th November 2024, which will have a minimum value of £175 (£50 per eligible child for food support and £125 per eligible Warwickshire household for utilities support). For a parent/carer to be eligible for the £50 payment their child must be attending a Warwickshire maintained educational setting and for the household to be eligible to receive the £125 payment, they must be a permanent resident of Warwickshire.

By providing supermarket vouchers to families/carers, which they can put towards their food bill, will free up their income to put towards other essential costs, for example utility bills.

Please note that instead of two grant funded cost of living payments in November and February, this time parent/carers of eligible children will receive one higher payment. This support will be sent automatically in the form of an SMS text link from Huggg. If parents have not received an SMS text or email voucher link for their child by Thursday 28th November 2024, parents can call the Welfare Scheme between 10am and 2pm between the 28th November and 11th December 2024 and will still receive the full voucher value. Families can use the Huggg link to obtain a food voucher from a shop of their choice at their most convenient location. The supermarket options are Aldi, Asda, Farmfoods, Iceland, McColl's, Morrison's, Sainsbury's, Tesco, and Waitrose. If families cannot use the supermarket voucher because a supermarket from the options listed is not easily accessible or an online delivery is not possible, the Local Welfare Scheme will support these families to ensure they still receive food support.

If you think you could be eligible for benefits-related free school meals, please go to <https://www.warwickshire.gov.uk/education-learning/apply-free-school-meals>



Ettington Church of England Primary School  
Churchill Close, Ettington. CV37 7SP.  
Tel: 01789 740236 Email: [admin3024@welearn365.com](mailto:admin3024@welearn365.com)  
Headteacher Mrs Michelle Crowe

## Safeguarding

Please remember...



**Safeguarding is everyone's responsibility**

If you have concerns that a child is suffering any form of abuse, neglect or cruelty contact the Warwickshire Children and Families Front Door immediately by calling **01926 414144**

Lines are open Monday to Thursday 8.30am - 5.30pm,  
Friday 8.30am - 5.00pm

If you need to get in touch out of usual office hours, please contact the Emergency Duty Team immediately by calling **01926 886922**

If you think that a child is at immediate risk, contact the Police immediately by calling **999**



Ettington Church of England Primary School  
Churchill Close, Ettington. CV37 7SP.  
Tel: 01789 740236 Email: [admin3024@welearn365.com](mailto:admin3024@welearn365.com)  
Headteacher Mrs Michelle Crowe

## **SAFELINE'S ONLINE PARENT WORKSHOPS**

### **HOW TO KEEP YOUR CHILD SAFE**

**Wednesday 27<sup>th</sup> of November 2024**  
**Online Safety**  
**5- 6pm**

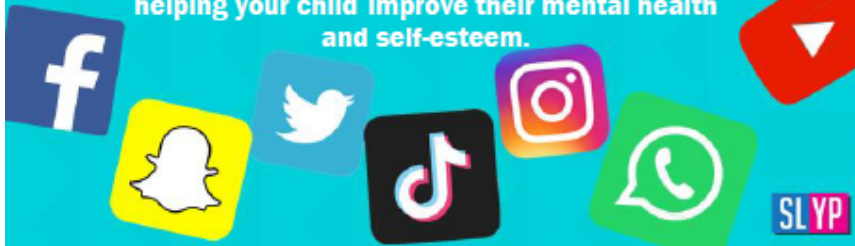
**Wednesday 4<sup>th</sup> of December 2024**  
**Mental health**  
**5- 6pm**

**Wednesday 11<sup>th</sup> of December 2024**  
**Bullying and Sexual Harassment**  
**5-6pm**

If you wish to attend please email  
[ramandeepd@safeline.org.uk](mailto:ramandeepd@safeline.org.uk)

**Zoom meeting ID - 765 294 7590**

**This workshop provides key knowledge around keeping your child safe online, some of the risks of the online world, guidance around bullying and harassment and also tips and strategies of helping your child improve their mental health and self-esteem.**



Ettington Church of England Primary School  
Churchill Close, Ettington. CV37 7SP.  
Tel: 01789 740236 Email: [admin3024@welearn365.com](mailto:admin3024@welearn365.com)  
Headteacher Mrs Michelle Crowe

At The National College, our WakeUpWednesday guides empower and equip parents, carers and educators with the confidence and practical skills to be able to have informed and age-appropriate conversations with children about online safety, mental health and wellbeing, and climate change. Formerly delivered by National Online Safety, these guides now address wider topics and themes. For further guides, hints and tips, please visit [nationalcollege.com](http://nationalcollege.com).

# 10 Top Tips for Parents and Educators ENCOURAGING CHILDREN TO CHOOSE RESPECT

Sometimes, differences between children can escalate into bullying, potentially impacting their mental health in a way that can persist into adulthood. While it's natural to disagree sometimes, teaching children the importance of respect is essential – especially in difficult situations. This guide provides strategies for encouraging considerate behaviour, even during a dispute, to foster a kinder, more inclusive environment for everyone.

## 1 LEAD BY EXAMPLE

As adults, we play a crucial role in modelling respectful behaviour for children: they observe and learn from our actions every day. Be mindful of the way you interact with others in front of children. Keep in mind that you should always approach others with an attitude of mutual respect, even if you disagree with them. Demonstrating this behaviour can influence young people and help them to handle their own conflicts in a healthy way.

## 2 AGREE TO DISAGREE

Make sure children know that it's fine to have differing opinions – and that disagreeing with someone doesn't mean you can't get along or respect each other's point of view. Help them understand that sometimes we can 'agree to disagree'. Using active listening skills when doing this can also help to build empathy and understanding of others.

## 3 PROMOTE ACTIVE LISTENING

Teach children about the importance of active listening: that is, making a genuine effort to listen to the other person's perspective without interrupting, before responding in a way that shows you understand their viewpoint, even (or perhaps especially) if you disagree with it. This makes people feel respected and allows for a better comprehension of their point of view, which in turn can make it easier for you to communicate your own opinions to them.

## 4 ENCOURAGE THE USE OF "I" STATEMENTS

If a child finds themselves in a disagreement with someone, it can be useful to encourage them to use "I" statements during the discussion. Framing their thoughts and feelings using statements like "I feel ..." or "I think ..." can help them avoid an accusatory tone and encourages them to take responsibility for their own emotions.

## 5 FOCUS ON BEHAVIOUR, NOT CHARACTER

When disagreements happen, encourage children to focus on critiquing and addressing the specific actions or behaviours that caused this upset, rather than attacking the person's character. For example, "I didn't like how you interrupted me" is better than "You're so rude". This can help children avoid hurting someone's feelings, which is likely to inflame the situation.

## 6 STAY CALM AND TAKE BREAKS

It's perfectly normal to feel upset during a disagreement – especially if it's getting heated. Remind children that if they feel overwhelmed, they should try to take deep breaths or even go for a short break to help them stay composed. If a conversation becomes too intense, remind them it's OK to suggest continuing it later or in a different setting. This can prevent things getting out of hand, allowing cooler heads to prevail.

## 7 START CONVERSATIONS ABOUT RESPECT

Talk openly to children about what respect means – to you and to them. Discuss how they might show respect to each other, to friends, to strangers and even to people we might disagree with. You could use examples of considerate or inconsiderate behaviour in books, films or TV to open discussions about the importance of giving others due regard.

## 8 SEEK COMMON GROUND

When a disagreement has occurred between children, they may find it hard to move past it. You can support them in finding a more positive way forward by helping identify areas of agreement or common ground with the other party. This can help to build bridges between differing opinions and foster a more cooperative atmosphere, as well as preventing those involved from demonising each another.

## 9 AVOID MAKING THINGS PERSONAL

It's important that we make it clear to children they must avoid name-calling, swearing or derogatory remarks in a disagreement with others. Respectful language sets a positive tone and helps keep the conversation productive. Reminding children to stay calm and take breaks – as mentioned previously – can help them avoid getting too emotional and saying or doing something hurtful.

## 10 REFLECT AND LEARN

After a child has had a disagreement, encourage them to reflect on the experience and think about what they can learn from it. What did they handle well? How might they improve their communication skills to handle conflicts more effectively in the future? You could use role play, writing and drawing pictures, or hypothetical examples to further develop their skills in showing respect during a disagreement.

## Meet Our Expert

The Anti-Bullying Alliance (ABA) co-ordinate Anti-Bullying Week each year. ABA is a unique coalition of organisations and individuals, working together to achieve their vision to stop bullying and create safer environments in which children and young people can live, grow, play and learn. They welcome membership from any organisation or individual that supports this vision and support a free network of thousands of schools and colleges.



Source: See full reference list on guide page at:

@wake\_up\_weds

/www.thenationalcollege

@wake.up.wednesday

@wake.up.weds

Users of this guide do so at their own discretion. No liability is entered into. Current as of the date of release: 06.11.2024



Ettington Church of England Primary School  
Churchill Close, Ettington. CV37 7SP.  
Tel: 01789 740236 Email: [admin3024@welearn365.com](mailto:admin3024@welearn365.com)  
Headteacher Mrs Michelle Crowe



UK Health  
Security  
Agency



# Should I keep my child off school?



## Yes

### Until...

Chickenpox	at least 5 days from the onset of the rash and until all blisters have crusted over
Diarrhoea and Vomiting	48 hours after their last episode
Cold and Flu-like illness (including COVID-19)	they no longer have a high temperature and feel well enough to attend. Follow the national guidance if they've tested positive for COVID-19.
Impetigo	their sores have crusted and healed, or 48 hours after they started antibiotics
Measles	4 days after the rash first appeared
Mumps	5 days after the swelling started
Scabies	they've had their first treatment
Scarlet Fever	24 hours after they started taking antibiotics
Whooping Cough	48 hours after they started taking antibiotics

## No

but make sure you let their school or nursery know about...

Hand, foot and mouth	Glandular fever
Head lice	Tonsillitis
Threadworms	Slapped cheek



SCAN ME

### Advice and guidance

To find out more, search for health protection in schools or scan the QR code or visit <https://qrco.de/minfec>.

© Crown copyright 2022. Product code: MSC21EN. 5K. APRIL 2022. (APS) Gateway number: 20211451



Ettington Church of England Primary School  
Churchill Close, Ettington. CV37 7SP.  
Tel: 01789 740236 Email: [admin3024@welearn365.com](mailto:admin3024@welearn365.com)  
Headteacher Mrs Michelle Crowe

## Parking

Thank you to all the parents and carers who continue to park safely around our school. You are super role models for your children. Can I please remind you, not to drive down and park in Churchill Close wherever possible? Can I also ask that you park with courtesy on the Banbury Road, it is imperative that driveways are not blocked or that visibility from driveways are not obscured? This is unsafe for both drivers and for people walking on the footpath.

**Please use the Community Centre for drop off and pickup.**

FUNDRAISING

**TABLE TOP SALE**

FREE ENTRY  
FREE ENTRY  
FREE ENTRY

STRATFORD FAMILY CLUB

toys children's books

SATURDAY 23RD NOVEMBER  
10.30AM - 1.00PM  
STRATFORD PLAY HOUSE  
14 ROTHER STREET CV37 6LU

adult and children's clothes

children's corner

refreshments

Help keep Stratford Family Club running for our community

The poster features a watercolor background with a blue and green top section and a yellow and orange bottom section. It includes illustrations of a toy truck, a teddy bear, a clothing rack, and a circular logo for Stratford Family Club with two swans. A green seal in the top left corner says 'FREE ENTRY' three times.



Ettington Church of England Primary School  
Churchill Close, Ettington. CV37 7SP.  
Tel: 01789 740236 Email: [admin3024@welearn365.com](mailto:admin3024@welearn365.com)  
Headteacher Mrs Michelle Crowe



Wishing you all a happy and safe weekend.

Best wishes,  
Michelle Crowe  
Head Teacher



Ettington Church of England Primary School  
Churchill Close, Ettington. CV37 7SP.  
Tel: 01789 740236 Email: [admin3024@welearn365.com](mailto:admin3024@welearn365.com)  
Headteacher Mrs Michelle Crowe

## Dates for your calendar and diary

Autumn Term 2 2024	Autumn Term 2 2024
<b>Monday 4 November</b> (School reopens to pupils)	<b>Monday 2 December</b> 2.00pm KS1 (Yr 1 and 2) Christmas Performance
<b>Thursday 7 November</b> Whole School Diwali Dance Workshop	<b>Tuesday 3 December</b> 6.00pm KS1 (Yr 1 and 2) Christmas Performance
<b>Friday 8 November</b> 9.00am Reading Inspire Workshop Reception Parents only	<b>Thursday 5 December</b> 2.30pm Reception Nativity Performance
<b>Friday 8 November</b> 3.15pm FoES Reception and Year 1 Cake Sale	<b>Friday 6 December</b> 9.30am Reception Nativity Performance  FOES Christmas Fayre
<b>Monday 11 November</b> Full Governing Board Meeting	<b>Monday 9 December</b> 6.00pm Community Musical Ensemble Community Centre
<b>w.c. Monday 11 November</b> Anti Bullying Week	<b>Tuesday 10 December</b> 9.00am SEND Coffee Morning Insomnia Coffee Shop
<b>Friday 15 November</b> Reception Eye Screening	<b>Friday 13 December</b> 1.30pm (time change) Maths Inspire Workshop Reception Parents only
<b>Thursday 21 November</b> 9.30am 2025 Reception Parents Open Morning	<b>Friday 13 December</b> 2.00pm – 3.00pm Curriculum Open Afternoon
<b>Friday 29 November</b> Years 5 and 6 Loudmouth Theatre Productions Helping Hands – Online Safety Drama Workshops	<b>Tuesday 17 December</b> 9.30am-10.30am Christmas Service at Church ALL WELCOME TO JOIN US Please let your child's class teacher know if you can help us walk to and from Church
	<b>Last day of term:</b> Friday 20 December
	<b>Christmas holiday:</b> Monday 23 December 2024 to Friday 3 January 2025



Ettington Church of England Primary School  
Churchill Close, Ettington. CV37 7SP.  
Tel: 01789 740236 Email: [admin3024@welearn365.com](mailto:admin3024@welearn365.com)  
Headteacher Mrs Michelle Crowe

	Monday 6 January 2025 (Teacher Training Day)
	Tuesday 7 January 2025 (School reopens to pupils)



Ettington Church of England Primary School  
Churchill Close, Ettington. CV37 7SP.  
Tel: 01789 740236 Email: [admin3024@welearn365.com](mailto:admin3024@welearn365.com)  
Headteacher Mrs Michelle Crowe